

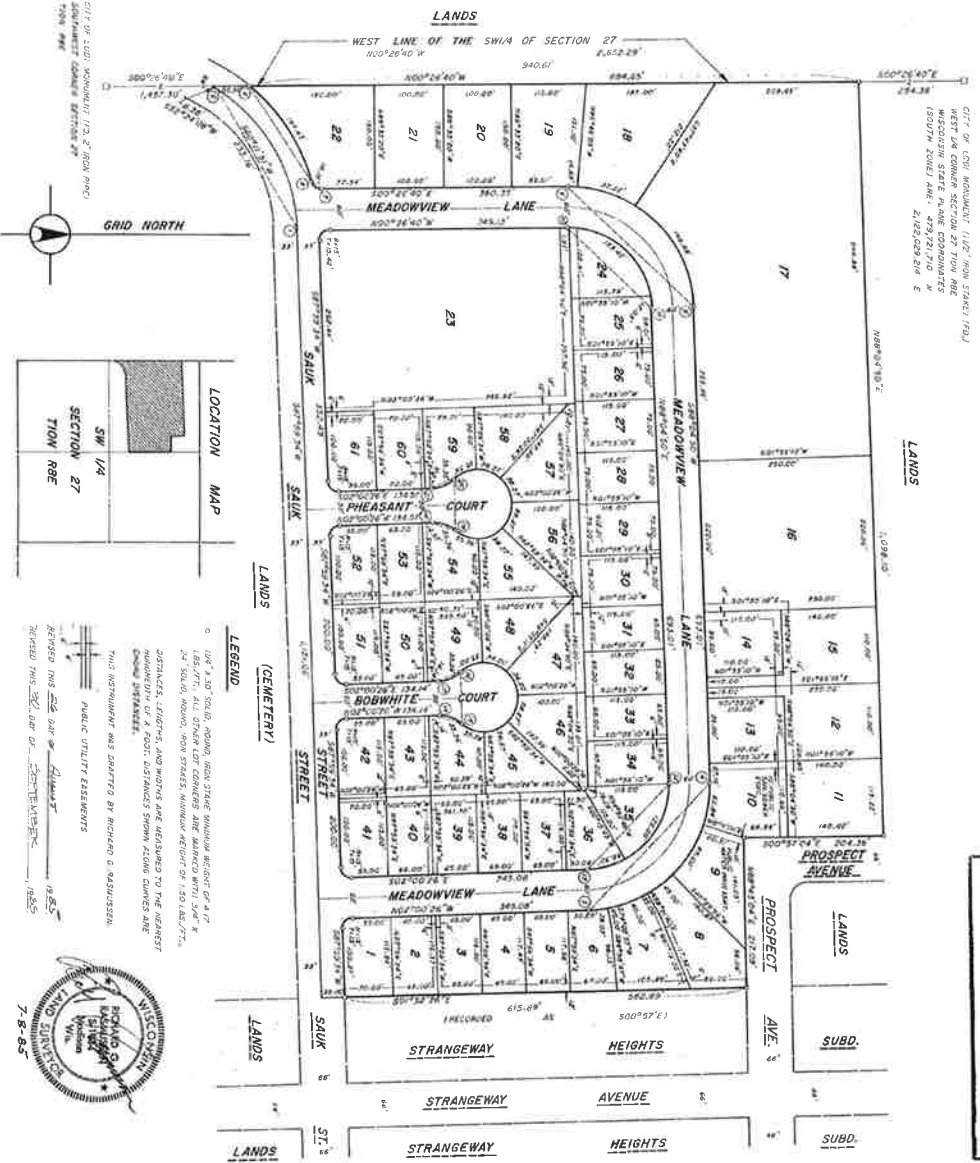
# WOODS EDGE

LOCATED IN THE NW/4 OF THE NW/4 OF SECTION 27, T10N, R9E, CITY OF LODI, COLUMBIA COUNTY, WISCONSIN

CURVE	LOT	RADIUS/FT.	CHORD/FT.	ARC LENGTH/FT.	CHORD BEARING	CENTRAL ANGLE	TANGENT BEARING
1-4	5	250.00	233.15	262.66	S80°11'51"W	55°51'26"	S5°51'26"E
	6	180.00	254.26	282.47	N65°52'45"W	29°04'44"	S9°04'44"E
	7	180.00	28.07	28.07	N06°28'45"W	08°56'38"	S08°56'38"E
	8	180.00	60.28	60.28	N20°25'14"W	13°51'16"	S13°51'16"E
	9	180.00	85.00	85.12	S37°13'11"W	14°51'14"	N14°51'14"E
	10	180.00	85.81	85.81	S08°09'27"W	27°18'15"	N27°18'15"E
	11	180.00	62.84	63.16	N81°52'01"W	20°06'18"	S20°06'18"E
	12	180.00	251.26	278.11	S13°07'05"W	23°51'30"	N23°51'30"E
	13	180.00	168.48	172.53	S60°10'33"W	5°51'30"	S5°51'30"E
	14	180.00	87.22	88.09	S18°15'07"W	28°02'26"	N28°02'26"E
	15	180.00	14.69	14.69	S01°53'37"E	01°40'31"	S01°40'31"E
	16	180.00	18.16	19.51	N04°08'14"E	04°04'39"	S04°04'39"E
	17	180.00	164.63	167.04	S57°09'31"W	33°49'10"	N33°49'10"E
	18	120.00	167.51	185.41	N13°49'05"E	88°21'30"	S88°21'30"E
	19	120.00	1.91	1.91	N00°00'43"E	00°54'46"	S00°54'46"E
	20	120.00	153.42	166.45	N10°12'17"E	7°52'22"	S7°52'22"E
	21	120.00	17.03	17.03	N84°00'39"E	05°00'22"	S05°00'22"E
	22	120.00	169.58	185.51	S46°57'48"E	89°54'44"	N89°54'44"E
	23	120.00	125.00	131.48	S65°51'55"E	6°26'17"	S6°26'17"E
	24	120.00	56.30	56.83	S15°54'31"E	27°08'10"	N27°08'10"E
	25	50.00	30.36	36.74	N18°41'51"E	4°19'24"	S4°19'24"E
	26	50.00	75.00	82.55	S87°59'34"W	26°24'08"	N26°24'08"E
	27	50.00	30.36	36.74	N18°41'51"E	4°19'24"	S4°19'24"E
	28	50.00	30.36	36.74	S87°59'34"W	26°24'08"	N26°24'08"E
	29	50.00	30.36	36.74	N18°41'51"E	4°19'24"	S4°19'24"E
	30	50.00	30.36	36.74	S87°59'34"W	26°24'08"	N26°24'08"E
	31	50.00	30.36	36.74	N18°41'51"E	4°19'24"	S4°19'24"E
	32	50.00	30.36	36.74	S87°59'34"W	26°24'08"	N26°24'08"E
	33	50.00	30.36	36.74	N18°41'51"E	4°19'24"	S4°19'24"E
	34	50.00	30.36	36.74	S87°59'34"W	26°24'08"	N26°24'08"E
	35	50.00	30.36	36.74	N18°41'51"E	4°19'24"	S4°19'24"E
	36	50.00	30.36	36.74	S87°59'34"W	26°24'08"	N26°24'08"E

LOT	AREA
1	8,040
2	7,547
3	7,281
4	7,616
5	7,650
6	7,516
7	10,979
8	12,581
9	10,320
10	11,973
11	15,685
12	17,050
13	10,450
14	10,450
15	17,050
16	25,000
17	15,869
18	22,597
19	15,384
20	13,000
21	15,000
22	18,300
23	96,205
24	8,754
25	8,618
26	8,625
27	8,625
28	8,625
29	8,625
30	8,625
31	8,625
32	8,625
33	8,625
34	8,625
35	8,625
36	8,625

LOT	AREA
1	7,475
2	7,475
3	7,475
4	7,475
5	8,001
6	8,001
7	7,475
8	6,406
9	8,816
10	6,406
11	10,205
12	6,406
13	7,475
14	7,475
15	8,001
16	8,001
17	7,475
18	6,406
19	8,001
20	10,205
21	6,406
22	6,406
23	6,406
24	6,406
25	6,406
26	6,406
27	6,406
28	6,406
29	6,406
30	6,406
31	6,406
32	6,406
33	6,406
34	6,406
35	6,406
36	6,406



*Clare A. Stern*  
 Department of Development

There are no objections to this plat with respect to Sec. 23A.13, 23A.14, 23A.20 and 23A.21 (1) and (2), Chapter Trans. 100, Stats., as amended, filed this 14th day of October, 1985.

**LEGEND**

0 1/2" = 1" 1/4" (150 FT.)

1" = 1" 1/2" (150 FT.)

2" = 2" (300 FT.)

3" = 3" (450 FT.)

4" = 4" (600 FT.)

5" = 5" (750 FT.)

6" = 6" (900 FT.)

7" = 7" (1050 FT.)

8" = 8" (1200 FT.)

9" = 9" (1350 FT.)

10" = 10" (1500 FT.)

11" = 11" (1650 FT.)

12" = 12" (1800 FT.)

13" = 13" (1950 FT.)

14" = 14" (2100 FT.)

15" = 15" (2250 FT.)

16" = 16" (2400 FT.)

17" = 17" (2550 FT.)

18" = 18" (2700 FT.)

19" = 19" (2850 FT.)

20" = 20" (3000 FT.)

21" = 21" (3150 FT.)

22" = 22" (3300 FT.)

23" = 23" (3450 FT.)

24" = 24" (3600 FT.)

25" = 25" (3750 FT.)

26" = 26" (3900 FT.)

27" = 27" (4050 FT.)

28" = 28" (4200 FT.)

29" = 29" (4350 FT.)

30" = 30" (4500 FT.)

31" = 31" (4650 FT.)

32" = 32" (4800 FT.)

33" = 33" (4950 FT.)

34" = 34" (5100 FT.)

35" = 35" (5250 FT.)

36" = 36" (5400 FT.)